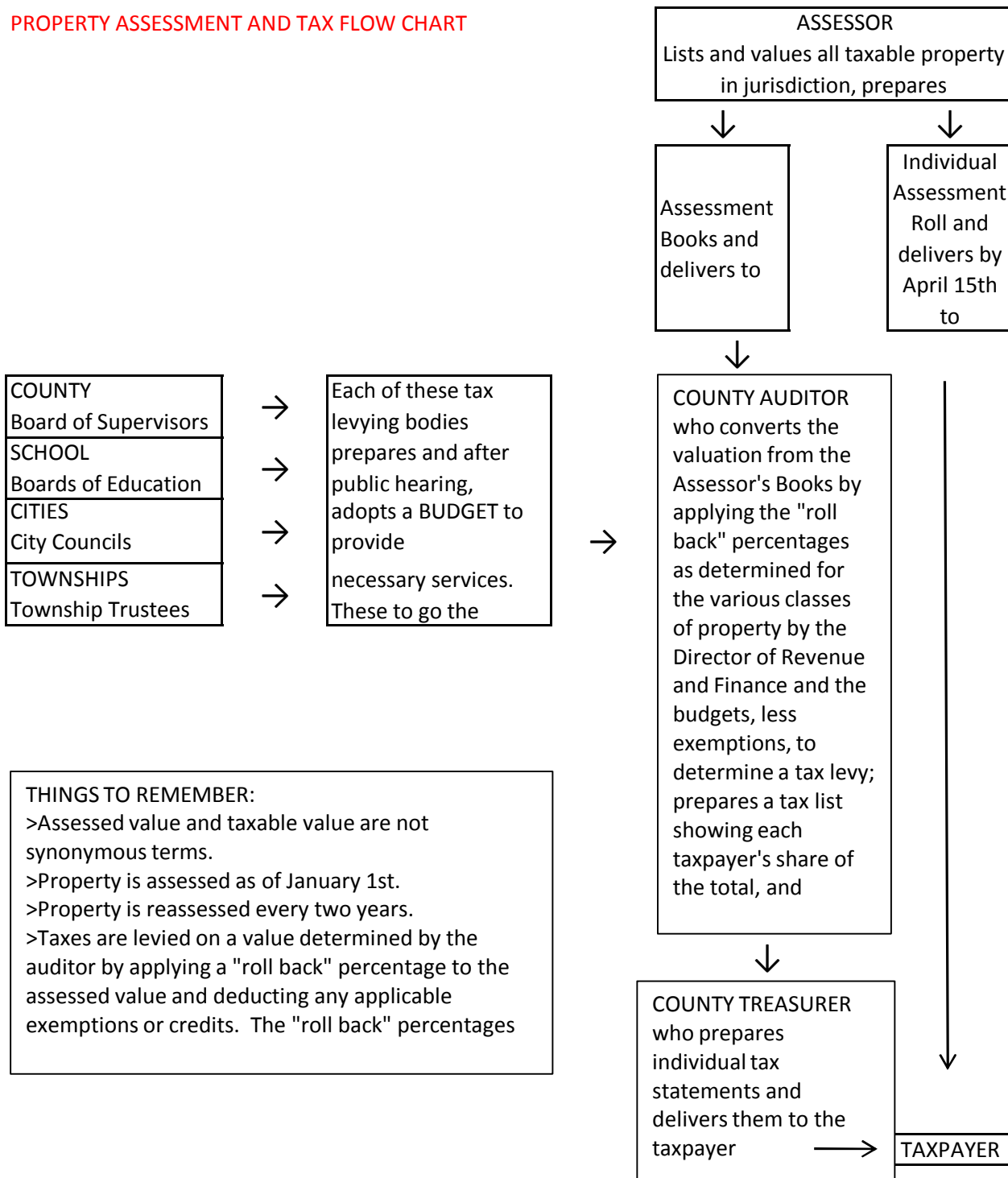


**PROPERTY ASSESSMENT AND TAX FLOW CHART**



**EXAMPLE:**

\$100,000	assessed value (residential class)
0.469094	roll back percentage (2009)
\$46,909	roll back value (taxable)
-4850	Homestead Credit
\$42,059	net taxable value
X 36.89410	levy \$ per thousand (varies with taxing district)
\$1,552	property tax (rounded to nearest even dollar)